

Overview of Company / Information about Shares

Company Overview (as of March 31, 2019)

Company Name	SEIKO HOLDINGS CORPORATION
Year of Establishment	1881
Capital	10 billion yen
Number of Employees	141 12,020 (consolidated)

Operating Revenue	11.3 billion yen
Consolidated Net Sales	247.2 billion yen
Head Office Address	26-1, Ginza 1-chome, Chuo-ku, Tokyo 104-8110, JAPAN Tel: +81-3-3563-2111

Consolidated Subsidiaries (as of March 31, 2019)

Description of major businesses	Name	Address
Watches	SEIKO WATCH CORPORATION	Chuo-ku, Tokyo
	SEIKO SERVICE CENTER CO., LTD.*1	Koto-ku, Tokyo
	CRONOS Inc.	Chiyoda-ku, Tokyo
	SEIKO Retail Marketing Corporation	Chuo-ku, Tokyo
	Grand Seiko Corporation of America	New York U.S.A.
	Seiko Watch of America LLC	New York U.S.A.
	SEIKO Time Corporation	New York U.S.A.
	SEIKO Panama, S.A.	Panama City Panama
	SEIKO U.K. Limited	Maidenhead U.K.
	SEIKO France S.A.S.	Besancon France
	SEIKO Nederland B.V.	Schiedam Netherlands
	SEIKO RUS Limited Liability Company	Moscow Russia
	SEIKO Hong Kong Ltd.	Kowloon Hong Kong
	SEIKO Watch (Shanghai) Co., Ltd.	Shanghai P.R. China
	SEIKO Taiwan Co., Ltd.	Taipei Taiwan
	SEIKO (Thailand) Co., Ltd.	Bangkok Thailand
	SEIKO Watch India Pvt. Ltd.	Bangalore India
	SEIKO Australia Pty. Ltd.	Macquarie Park Australia
	Morioka Seiko Instruments Inc.	Mihama-ku, Chiba
	Ninohe Tokei Kogyo Co., Ltd.	Mihama-ku, Chiba
Tono Seiki Co., Ltd.	Tono-shi, Iwate	
Michinoku Service Co., Ltd.	Morioka-shi, Iwate	
Guangzhou SII Watch Co., Ltd.	Guangzhou P.R. China	
Instruments Technology (Johor) Sdn. Bhd.	Johor Bahru Malaysia	
Electronic Devices	Seiko Instruments Inc.	Mihama-ku, Chiba
	Seiko Instruments (H.K.) Ltd.	Kowloon Hong Kong
	Dalian Seiko Instruments Inc.	Dalian P.R. China
	Seiko Instruments Singapore Pte. Ltd.	Singapore Singapore
	SII Printek Inc.	Mihama-ku, Chiba
	City Service Co., Ltd.	Mihama-ku, Chiba
	Seiko EG&G Co., Ltd.	Mihama-ku, Chiba
	Seshika Inc.	Mihama-ku, Chiba
	Seiko I Techno Research Co., Ltd.	Mihama-ku, Chiba
	SII Crystal Technology Inc.	Mihama-ku, Chiba

Description of major businesses	Name	Address
Electronic Devices	Seiko Instruments U.S.A., Inc.	Torrance U.S.A.
	Seiko Instruments GmbH	Neu-Isenburg Germany
	Seiko Instruments (Shanghai) Inc.	Shanghai P.R. China
	Seiko Instruments Technology (Shanghai) Inc.	Shanghai P.R. China
	Seiko Instruments Taiwan Inc.	Taipei Taiwan
	Seiko Instruments (Thailand) Ltd.	Pathumthani Thailand
	Asian Electronic Technology Pte. Ltd.	Singapore Singapore
	SEIKO NPC CORPORATION	Chuo-ku, Tokyo
	SEIKO Precision (Thailand) Co., Ltd.	Pathumthani Thailand
	Systems Solutions	SEIKO Solutions Inc.
IIM Corporation		Bunkyo-ku, Tokyo
Others	SEIKO Clock Inc.	Koto-ku, Tokyo
	SEIKO CLOCK (Hong Kong) Ltd.	Kowloon Hong Kong
	SEIKO CLOCK (Shenzhen) Co., Ltd.	Shenzhen P.R. China
	WAKO Co., Ltd.	Chuo-ku, Tokyo
	SEIKO Time Systems Inc.	Koto-ku, Tokyo
	Human Capital Co., LTD.	Mihama-ku, Chiba
	KYOBASHI KIGYO (K.K.)	Chuo-ku, Tokyo
	Shirakawa Estate Co., Ltd.	Chuo-ku, Tokyo

And three other companies

*1. SEIKO SERVICE CENTER CO., LTD. was renamed to SEIKO TIME LABS CO., LTD. on September 1, 2019.

*2. Chino Watch Co., Ltd. became a consolidated subsidiary on October 1, 2019.

Affiliates accounted for by the equity method

Description of major businesses	Name	Address
Watches	CLOCKWORK HOLDINGS INC.	Chuo-ku, Tokyo
Electronic Devices	ABLIC Inc.	Mihama-ku, Chiba
	Jedat Inc.	Chuo-ku, Tokyo
	SII Logistics Inc.	Mihama-ku, Chiba
Others	SEIKO OPTICAL PRODUCTS CO., LTD.	Chuo-ku, Tokyo
	OHARA INC.	Sagamihara-shi, Kanagawa

Information about Shares (as of March 31, 2019)

Total number of shares authorized to be issued: 149,200,000

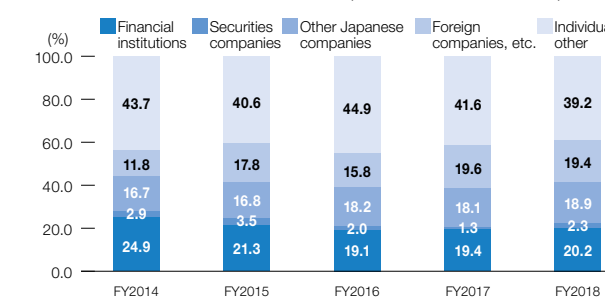
Total number of shares issued and outstanding: 41,404,261

Number of shareholders: 11,575

Status of Major Shareholders (as of March 31, 2019)

Name	Number of shares (x 1,000)	Ratio
Sanko Kigyo K.K.	4,436	10.7%
Etsuko Hattori	3,613	8.7%
Shinji Hattori	2,279	5.5%
The Dai-ichi Life Insurance Company, Limited	1,800	4.4%
Hideo Hattori	1,620	3.9%
The Master Trust Bank of Japan, Ltd. (Trust Account)	1,179	2.9%
Japan Trustee Services Bank, Ltd (Trust Account 9)	1,037	2.5%
GOLDMAN SACHS INTERNATIONAL	983	2.4%
Japan Trustee Services Bank, Ltd (Trust Account)	850	2.1%
SHIMIZU CORPORATION	744	1.8%

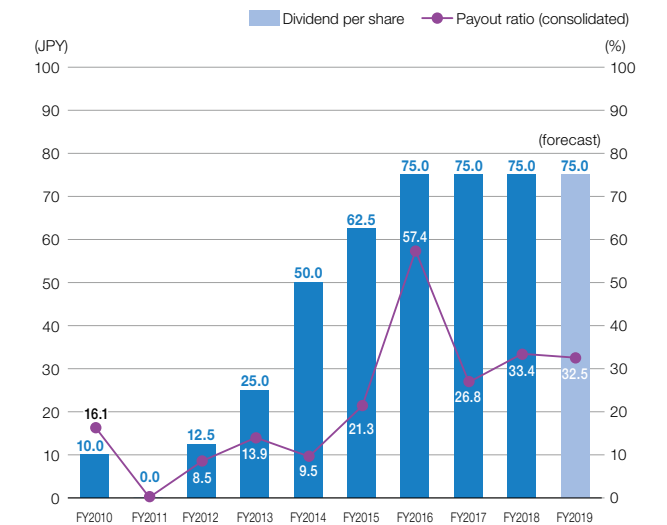
Distribution of Shares (as of March 31, 2019)



Dividend Policy

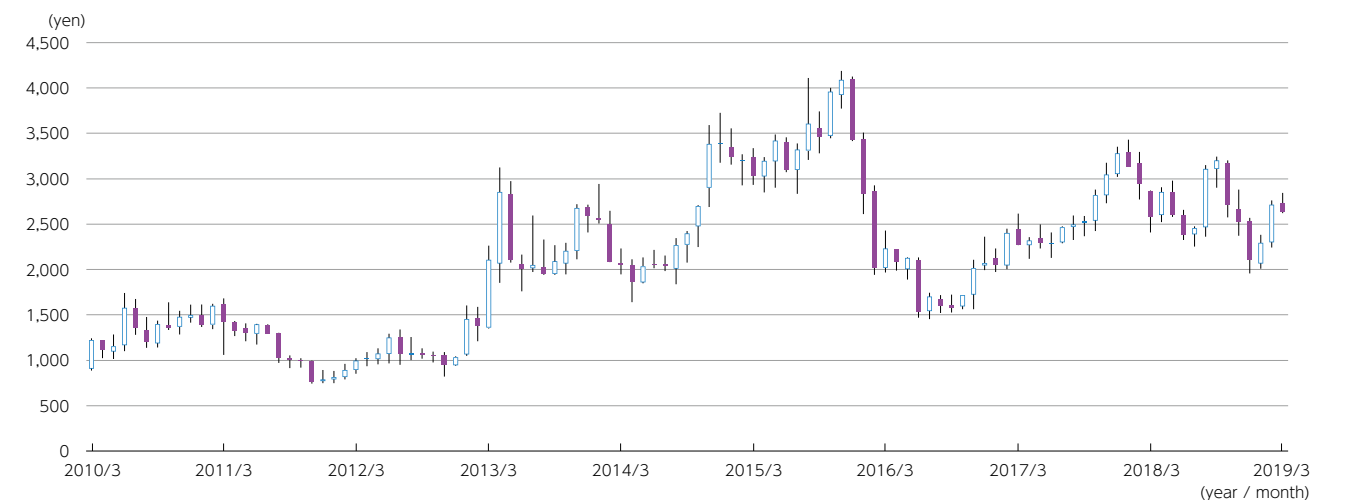
With regard to profit allocation, the basic policy is to continue to distribute stable dividends with consideration of capital efficiency and stable profit distribution to shareholders, while also enhancing capital adequacy. In addition, the company's major profit return policy to shareholders is to return profits by dividends.

Dividend payout ratio



* Share consolidation performed on October 1, 2017 at a ratio of 5 ordinary shares to 1. The above annual dividend is when consolidation of shares is considered.

Share Price Transition



* Share consolidation performed on October 1, 2017 at a ratio of 5 ordinary shares to 1. The above share price is when consolidation of shares is considered.